

Short Breaks in Staffordshire (Aiming High)

Activity Guide
July-September 2014

Activities for children and
young people with
a disability or
additional need and
their families
in Staffordshire



Welcome to the Aiming High Summer 2014 Activity Guide. To help with planning, Aiming High short break activities are displayed in the calendars starting on page 3. For full details of our activities please see the listings starting on page 6.

Who can take part?

Activities are open to children and young people with a disability or additional need aged up to and including 17 years old who live in Staffordshire. Parents/carers and siblings are also welcome to take part in some activities. Please see individual adverts for more details on who can take part.

Is there a charge for activities?

The majority of Aiming High activities are completely FREE, however, a voluntary contribution is requested by some providers. Where applicable this will be highlighted in the individual adverts.

How to book places and find out more information

To book places please contact the providers listed directly.

If you are unsure about whether any of the activities will be suitable please speak to our providers who will be happy to answer questions or talk through any concerns you have.

If you book an activity and can no longer attend you MUST let the provider know with as much notice as possible. When places are booked and then not taken up it means other families have missed out and it also wastes money for short breaks.

Keeping up to date with Aiming High Activities

To receive activity updates via email please call 01785 278072 or email aiminghigh@staffordshire.gov.uk

Further information on Aiming High is available on our website at:

www.staffordshire.gov.uk/aiminghigh

Best wishes,
The Aiming High Team

July 2014

Mon	Tues	Wed	Thur	Fri	Sat	Sun
	<p>1 Sahara Meeting (page 10)</p>	<p>2 Nature Tots (page 14)</p>	<p>3 Able Too FC (page 6) Chase It (page 27)</p>	<p>4</p>	<p>5 Golf (page 6) Stay & Play (page 23) Inspire Club (page 29)</p>	<p>6 Horse Riding (page 21) Farm Visit (page 26) Inspire Club (page 29)</p>
<p>7 Golf (page 6) Chase It (page 27)</p>	<p>8</p>	<p>9</p>	<p>10 Able Too FC (page 6) Chase It (page 27) Inspire Club (page 29)</p>	<p>11 Pony Trek (page 7)</p>	<p>12 Golf (page 6) ACTION (page 15) Youth Club (page 23) Inspire Club (page 29)</p>	<p>13 Horse Riding (page 21) Inspire Club (page 29)</p>
<p>14 Golf (page 6) Chase It (page 27)</p>	<p>15</p>	<p>16 Nature Tots (page 14)</p>	<p>17 Able Too FC (page 6) Chase It (page 27)</p>	<p>18</p>	<p>19 Golf (page 6) Bowling (page 17) Stay & Play (page 23) Youth Club (page 23) Inspire Club (page 29)</p>	<p>20 Horse Riding (page 21) Animal Magic (page 26) Inspire Club (page 29)</p>
<p>21 Golf (page 6) Wildplay (page 13) Chase It (page 27)</p>	<p>22 Multi Sports (page 22) Birches Valley (page 24)</p>	<p>23 Key Steps (page 8) Countryside Fun (page 20) Multi Sports (page 22)</p>	<p>24 Farm Day (page 11) Multi Sports (page 22) Chase It (page 27) Musical Theatre Workshop (page 12)</p>	<p>25 Key Steps (page 8) Countryside Fun (page 20) Multi Sports (page 22)</p>	<p>26 Golf (page 6) Countryside Fun (page 20) Inspire Club (page 29)</p>	<p>27 Horse Riding (page 21) Inspire Club (page 29)</p>
<p>28 Golf (page 6) Play Shed (page 24) Farm Visit (page 26) Chase It (page 27)</p>	<p>29 Multi Sports (page 22)</p>	<p>30 Activity Day (page 7) Key Steps (page 8) Wildplay (page 13) Playscheme (page 20) Multi Sports (page 22)</p>	<p>31 Farm Day (page 11) Countryside Fun (page 20) Multi Sports (page 22) Monkey Forest (page 24) Chase It (page 27)</p>			

August 2014

Mon	Tues	Wed	Thur	Fri	Sat	Sun
				<p>1 Key Steps (page 8)</p> <p>Countryside Fun (page 20)</p> <p>Multi Sports (page 22)</p>	<p>2 Golf (page 6)</p> <p>Beatrice Barge (page 18)</p> <p>Countryside Fun (page 20)</p> <p>Stay & Play (page 23)</p> <p>Youth Club (page 23)</p> <p>Inspire Club (page 30)</p>	<p>3 Horse Riding (page 21)</p> <p>Inspire Club (page 30)</p>
<p>4 Golf (page 6)</p> <p>Play Shed (page 24)</p> <p>Chase It (page 27)</p>	<p>5 Family Day (page 10)</p> <p>Wildplay (page 13)</p> <p>Playscheme (page 20)</p> <p>Horse Riding (page 21)</p> <p>Multi Sports (page 22)</p>	<p>6 Multi Sports (page 22)</p> <p>Farm Visit (page 26)</p>	<p>7 Farm Day (page 11)</p> <p>Countryside Fun (page 20)</p> <p>Multi Sports (page 22)</p> <p>Chase It (page 27)</p>	<p>8 Multi Sports (page 22)</p>	<p>9 Golf (page 6)</p> <p>ACTION (page 15)</p> <p>Inspire Club (page 30)</p>	<p>10 Sailing (page 17)</p> <p>Inspire Club (page 30)</p> <p>Farm activity (page 26)</p>
<p>11 Golf (page 6)</p> <p>Wildplay (page 13)</p> <p>Play Shed (page 24)</p> <p>Chase It (page 27)</p>	<p>12 Activity Day (page 7)</p> <p>Wildplay (page 13)</p> <p>Sensory Event (page 21)</p> <p>Multi Sports (page 22)</p> <p>Fishing/Horticulture (page 25)</p>	<p>13 Countryside Fun (page 20)</p> <p>Playscheme (page 20)</p> <p>Multi Sports (page 22)</p> <p>Alton Towers Waterpark (page 25)</p>	<p>14 Farm Day (page 11)</p> <p>Wildplay (page 13)</p> <p>Multi Sports (page 22)</p> <p>Chase It (page 27)</p>	<p>15 Countryside Fun (page 20)</p> <p>Multi Sports (page 22)</p> <p>Farm Visit (page 26)</p>	<p>16 Golf (page 6)</p> <p>Countryside Fun (page 20)</p> <p>Stay & Play (page 23)</p> <p>Youth Club (page 23)</p> <p>Inspire Club (page 30)</p>	<p>17 Inspire Club (page 30)</p>
<p>18 Golf (page 6)</p> <p>Wildplay (page 13)</p> <p>Playscheme (page 16)</p> <p>Play Shed (page 24)</p> <p>Chase It (page 27)</p>	<p>19 Wildplay (page 13)</p> <p>Playscheme (page 16)</p> <p>Playscheme (page 20)</p> <p>Multi Sports (page 22)</p> <p>Stafford Castle (page 25)</p>	<p>20 Playscheme (page 16)</p> <p>Multi Sports (page 22)</p>	<p>21 Farm Day (page 11)</p> <p>Wildplay (page 13)</p> <p>Playscheme (page 16)</p> <p>Multi Sports (page 22)</p> <p>Chase It (page 27)</p> <p>Inspire Club (page 30)</p>	<p>22 Playscheme (page 16)</p> <p>Multi Sports (page 22)</p>	<p>23 Golf (page 6)</p> <p>Key Steps (page 8)</p> <p>Farm Visit (page 26)</p> <p>Inspire Club (page 30)</p>	<p>24 Tittesworth Reservoir (page 18)</p> <p>Inspire Club (page 30)</p>
<p>25 Golf (page 6)</p>	<p>26 Theme Park Trip (page 10)</p> <p>Wildplay (page 13)</p> <p>Horse Riding (page 21)</p> <p>Multi Sports (page 22)</p>	<p>27 Key Steps (page 8)</p> <p>Playscheme (page 20)</p> <p>Multi Sports (page 22)</p>	<p>28 Farm Day (page 11)</p> <p>Wildplay (page 13)</p> <p>Sensory Event (page 21)</p> <p>Multi Sports (page 22)</p> <p>Chase It (page 27)</p>	<p>29 Key Steps (page 8)</p> <p>Multi Sports (page 22)</p> <p>Summer Party (page 25)</p>	<p>30 Golf (page 6)</p> <p>Inspire Club (page 30)</p>	<p>31 Inspire Club (page 30)</p>

September 2014

Mon	Tues	Wed	Thur	Fri	Sat	Sun
<p>1 Golf (page 6) Chase It (page 27)</p>	<p>2 Wildplay (page 13)</p>	<p>3</p>	<p>4 Able Too FC (page 6) Chase It (page 27) Inspire Club (page 31)</p>	<p>5</p>	<p>6 Golf (page 6) Swimming (page 16) Stay & Play (page 23) Youth Club (page 23)</p>	<p>7 Inspire Club (page 31)</p>
<p>8 Golf (page 6) Chase It (page 27)</p>	<p>9</p>	<p>10</p>	<p>11 Able Too FC (page 6) Chase It (page 27)</p>	<p>12 Start of Residential Weekend (page 9)</p>	<p>13 Golf (page 6) ACTION (page 15) Inspire Club (page 31)</p>	<p>14 Inspire Club (page 31)</p>
<p>15 Golf (page 6) Chase It (page 27)</p>	<p>16</p>	<p>17 Nature Tots (page 14)</p>	<p>18 Able Too FC (page 6) Chase It (page 27) Inspire Club (page 31)</p>	<p>19</p>	<p>20 Golf (page 6) Family Fun Day (page 14) Stay & Play (page 23) Youth Club (page 23) Farm Visit (page 26)</p>	<p>21 Inspire Club (page 31)</p>
<p>22 Golf (page 6) Chase It (page 27)</p>	<p>23</p>	<p>24</p>	<p>25 Able Too FC (page 6) Chase It (page 27)</p>	<p>26</p>	<p>27 Golf (page 6) Family Fun Day (page 14)</p>	<p>28 Family Day (page 9) Family Fun Day (page 14) Inspire Club (page 31)</p>
<p>29 Golf (page 6) Chase It (page 27)</p>	<p>30</p>					

Golf

Golf for the whole family. All golf equipment is provided free of charge. No experience necessary.

Provider: The Golf Academy.

Venue: The Range, Wood Farm, Broad Lane, Essington, Near Wolverhampton, WV11 2RJ.

When:

- Every Monday (5 - 7pm) and Saturday (3 - 5pm) throughout the year including school holiday periods.
- Summer Holiday Clubs - for information on dates please contact Craig.

Available to: 6-17 year olds. Parents/carers and siblings also welcome. Activities are suitable for young people with a wide range of disabilities and support needs. Please contact Craig to discuss individual needs.

***This activity is free of charge*.**

BOOKING IS ESSENTIAL.

Contact: Craig Thomas - 07973 798483
info@thegolfacademy.co.uk



Able Too United Junior Football Club

Football activities, team games and league matches. All footballing ability levels welcome.



Provider: Able Too Forum/
Burton Albion Community Trust.

Venue: Shobnall Leisure Complex, Burton, DE14 2BB.

When: 5-7pm, Thursdays on the following dates:

July - 3rd, 10th and 17th
September - 4th, 11th, 18th and 25th

Available to: 8-15 year olds.

Activities are suitable for young people with a wide range of disabilities and support needs.

***This activity is free of charge*.**

There is no need to book, just come along but if you have any questions please contact Neil Brown.

Contact: Neil Brown - 01283 508192
neil.brown@eaststaffsbc.gov.uk

Holiday Activity Days

Activities include multi-sports, dance, boccia and table cricket.



Provider: Burton Albion Community Trust.

Venue/When:

1. Wednesday 30th July (10am-4pm)

Abbotsholme School, Rocester, Uttoxeter, ST14 5BS.

2. Tuesday 12th August (10am-4pm)

Shobnall Leisure Complex, Shobnall Road, Burton on Trent, DE14 2BB.

Available to: 5-17 year olds. Parents/carers and siblings are also welcome to attend. One to one care cannot be provided.

Participants staying for the full day will need to bring a packed lunch.

***This activity is free of charge*.**

BOOKING IS ESSENTIAL.

Contact: Bookings can be made online at www.burtonalbioncommunitytrust.co.uk

For any questions please contact Steven Shuttlewood
- 01283 565938
disabilityofficer@burtonalbionfc.co.uk

Activities for Young People with a Visual Impairment



Provider: Specialist Support Service (Visual Impairment Team).

Venue/When:

1. Pony Trekking at Cannock Chase Trekking Centre

- Friday 11th July, 6-8pm.

2. Other activities

To be kept up to date on other activities taking place throughout the year please contact Sarah Walleth using the contact details below.

A few spaces are also still available on the following activities which are taking place in June:

- **Pottery Party** at The Codsall Hive on Saturday 21st June, 3-5pm.
- **Bellboating** at Trentham Lake on 27th June, 5.30-8pm.

Please contact Sarah Walleth on the number below for latest availability and full details.

Available to: Children and young people aged 5-17 with a visual impairment. Siblings are also welcome to take part in some activities.

***This activity is free of charge*.**

BOOKING IS ESSENTIAL.

Contact: Sarah Walleth - 01785 356838
sarah.walleth@staffordshire.gov.uk

Key Steps Plus



- ◆ **Drama Workshop** - a day of drama, music, script writing and set design which promotes self-expression and confidence building, encouraging young people to think about their own identity, likes, dislikes, hobbies and aspirations. A performance showcase will be developed based on the ideas and talents of the young people.
- ◆ **Creature Comforts** - close encounters with a range of exotic animals. A chance to learn about the habitats and environments of the animals and benefit from the therapeutic values associated with animals.
- ◆ **Your Community** - visit to a local Care Farm and a chance to learn about local food produced through growing projects. There will also be an opportunity for hands on experience with the farm animals.
- ◆ **Cookery Workshop** - push the boundaries of cooking by mixing culinary skills with scientific experiments in a 'Heston Blumenthal style' feast. This session aims to open the minds of young people to a variety of tastes, textures and food combinations. It will also aim to promote cooking as a fun, exciting activity and a possible career path.

Provider: Caudwell Children.

1. Leek Sessions - St Pauls Church Centre, Novi Lane, Leek, ST13 6NR.

- Friday 25th July (10am-4pm): Drama Workshop
- Friday 1st August (10am-4pm): Creature Comforts
- Friday 29th August (10am-4pm): Your Community

Leek - Limited spaces available - please contact Emily for latest availability.

2. Tamworth Sessions - District Activity Centre, Deltic, Glascote, Tamworth, B77 4DU.

- Wednesday 23rd July (10am-4pm): Drama Workshop
- Wednesday 30th July (10am-4pm): Creature Comforts
- Wednesday 27th August (10am-4pm): Your Community

Tamworth - Limited spaces available - please contact Emily for latest availability.

3. Cannock Sessions - St Aidan's Church Hall, Albert Street, Cannock, Staffs, WS11 5JD.

- Saturday 23rd August (10am-4pm): Drama Workshop

*Places are also still available for the **Cookery Workshop** on **Saturday 28th June**, 10am-4pm in **Cannock** at **St Aidan's Church Hall**.*

Available to: 8-17 year olds. Parents/carers must stay for the first session but will be free to leave children for any following sessions. Personal care cannot be provided but parents/carers are welcome to stay with young people who need this support. All venues have disabled access, toilet facilities and parking. Sessions are staffed with trained volunteers who are there to support and supervise children at all times.

***This activity is free of charge*. BOOKING IS ESSENTIAL.**

Contact: Emily Buttery - 01782 600263

Residential Weekend and Family Day at Outdoor Education Centres



Residential family weekend or day visit with lots of fun and adventurous activities for all the family. Activities could include climbing, bushcraft, rope courses, BMX trail cycling and much more.

Provider: Entrust Outdoor Education Services.

Venue/When:

1. Residential Family Weekend at Laches Wood

- Friday 12th to Sunday 14th September (arrival from 4pm Friday and departing by 2pm on Sunday).
- Venue: Laches Wood Outdoor Education Centre, Laches Lane, Slade Heath, Wolverhampton, WV10 7PA.

2. Family Day at Standon Bowers

- Sunday 28th September (9.30am – 4.30pm)
- Venue: Standon Bowers Outdoor Education Centre, Weston Lane, Standon, Stafford, ST21 6RD.

Available to: Activities are led by teams of experienced outdoor instructors and are suitable for children and young people of all ages with a wide range of disabilities and support needs. Parents/carers must attend and siblings are also welcome. Hoist is available at both venues and all activities are fully accessible.

***This activity is free of charge*.**

BOOKING IS ESSENTIAL.

Contact: 01782 791422 or email oc@entrust-ed.co.uk (please state which of the events you are interested in).

Sahara Group Activities



Lots of fun activities including trips out and cultural family days for families to enjoy diverse and varied experiences from other backgrounds as well as a parent support group.

Provider: Hawthorns Resource Centre (Sahara Group).

Venue/When:

1. Sahara Meeting - Tuesday 1st July, 11am-1pm

Venue: Hawthorns Resource Centre, 200 Horninglow Road, Burton on Trent, DE14 2PY.

Chance for parents/carers to meet other parents/carers and to find out about activities and services available to them. Refreshments are available. Children under 5 are also welcome to come along and can play in the play room during the meeting.

2. Cultural Family Fun Day - Tuesday 5th August, 11am-2pm

Venue: Hawthorns Resource Centre, 200 Horninglow Road, Burton on Trent, DE14 2PY.

3. Theme Park Trip - Tuesday 26th August, 10am start

Available to: 0-12 year olds from East Staffordshire and their parents/carers and siblings.

Activities are suitable for children with a wide range of disabilities and support needs.

Additional places will be available to children and young people from other areas. Please contact Kim for more information on this.

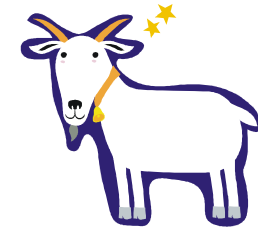
***This activity is free of charge*.**

BOOKING IS ESSENTIAL.

Contact: Kim Billingham - 01283 845237

Farm Activity Days

Get involved in looking after a range of animals including horses, pigs, goats and turkeys, grow and cook your own food, enjoy walks in the countryside and take part in woodland craft and den building. Learn lots, have fun and make new friends.



Provider: Sherratts Wood CIC.

Venue: Sherratts Wood Farm, Middleton Green, Leigh, ST10 4PQ.

When: 10am-3pm, Thursdays on the following dates:

24th July, 31st July, 7th August, 14th August, 21st August and 28th August

Available to: 5 - 17 year olds. Activities are suitable for young people with a wide range of disabilities and support needs. Parents and carers are also welcome to join in but do not need to stay.

Support for children with personal care needs is not available, however, parents/carers are welcome to attend with children who need this support. A disabled accessible toilet is available and wheelchair access is available to parts of the farm.

Lunch can be provided for £3 (please book this in advance). Alternatively please take your own packed lunch.

Free transport from Newcastle/Hanley areas is available - please contact Louise for more information.

***This activity is free of charge*.**

BOOKING IS ESSENTIAL.

Contact: Louise - 01889 502662 or 07714 288247
louise@sherrattswood.com

Fun Musical Theatre Workshop

Provider: Chuckle Productions.



Venue: Wombourne Library, Church Road, Wombourne, WV5 9EZ.

When: Thursday 24th July 10am-12noon.

Available to: 8 to 15 year olds. Activities are suitable for young people with a wide range of disabilities and support needs. Parents/carers do not need to stay.

***This activity is free of charge*.**

BOOKING IS ESSENTIAL.

Contact: Sara Christie - 07837 741510
fun@chuckleproductions.org

Coming Soon - Independence Skills Support

Sessions which will support young people with their transition to adulthood and in developing social and independent living skills will soon be taking place in **Tamworth and Lichfield.**



A wide variety of topics will be covered including:

- Relationships
- Cooking skills and exercise routines
- Stranger danger/community safety
- Fire safety
- Road safety
- How to catch public transport
- CV's and interview skills

Provider: KIDS.

Available to: 14-17 year olds. Activities are suitable for young people with a wide range of disabilities and support needs.

Contact: To find out more about this activity and to register your interest for information on dates please contact Laura Bryan on 0121 3552707.

Wildplay

Lots of exciting activities including mini-beast hunting, pond dipping, grass sledging, assault courses, den building and games.



Provider: Staffordshire Wildlife Trust.

Venue/When:

1. **Apedale** - Apedale Country Park, Loomer Road, Newcastle, ST5 7LB.

10am-3pm on: Tuesday 5th August, Tuesday 12th August, Tuesday 19th August, Tuesday 26th August,
Tuesday 2nd September

2. **Wolseley** - The Wolseley Centre, Wolseley Bridge, near Rugeley, ST17 0WT.

10am-3pm on: Monday 21st July, Wednesday 30th July, Thursday 14th August, Monday 18th August, Thursday 21st August,
Thursday 28th August

3. **Highgate** - Highgate Common - Cory Community Building, Highgate Road, South Staffs, DY7 5BS.

10am-3pm on: Monday 11th August, Monday 18th August

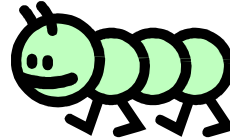
Available to: 8-14 year olds. This activity is accessible for young people with a wide range of disabilities and support needs. Parents and carers do not need to stay. Support with personal care needs is not available, however, parents/carers are welcome to attend with young people who need this support. All sites have a disabled toilet and are accessible for young people who use a wheelchair but please discuss this with the activity leader when booking.

***This activity is free of charge*. BOOKING IS ESSENTIAL.**

Contact: 01889 880105
education@staffs-wildlife.org.uk

Nature Tots

Learn more about nature with lots of craft activities, outdoor exploration and story time. Each week we will have a different seasonal theme.



Provider: Staffordshire Wildlife Trust.

Venue: The Wolseley Centre, Wolseley Bridge, near Stafford, ST17 0WT.

When: 10am-12 noon on:

- Wednesday 2nd July
- Wednesday 16th July
- Wednesday 17th September

**Activity for
young children**

Available to: Under 5's and their parents/carers. Siblings under 5 also welcome. This activity is suitable for children with a wide range of disabilities and support needs. Disabled toilet is available. Outdoor areas are all fully surfaced and wheelchair accessible but it is advisable to check with staff before your visit to make sure that the venue is suitable for your child's needs.

***This activity is free of charge*.**

BOOKING IS ESSENTIAL.

Contact: 01889 880105
education@staffs-wildlife.org.uk

Family Fun Days



Lots of fun outdoor activities for the whole family including games, bug hunts, shelter building and much more!

Provider: Staffordshire Wildlife Trust.

Venue/When:

1. **Stafford** - Saturday 20th September (10am-1pm)
- The Wolseley Centre, Wolseley Bridge, near Stafford, ST17 0WT.
2. **North Staffordshire** - Saturday 27th September (10am-1pm)
- Apedale Country Park, Loomer Road, Newcastle, ST5 7LB.
3. **South Staffs** - Sunday 28th September (10am-1pm)
- Highgate Common, Cory Community Building, Highgate Road, South Staffs, DY7 5BS.

Available to: 4-17 year olds and their parents/carers and siblings. Parents/carers must stay with their children throughout the activity.

All venues have disabled toilets and accessible pathways but it is advisable to check with staff before your visit to make sure that the venue is suitable for your child's needs. Activities are suitable for young people with a variety of disabilities but personal care cannot be provided by staff.

***This activity is free of charge*.**

BOOKING IS ESSENTIAL.

Contact: 01889 880105
education@staffs-wildlife.org.uk

ACTION Workshops

Workshops that include filming, editing, stop frame animation, script writing, iPads and musical instruments.



Provider: Gifted Workshops.

Venue: Elim Church Hall, Silverdale, Newcastle, ST5 6LY.

When: 3 - 5pm on:

- Saturday 12th July
- Saturday 9th August
- Saturday 13th September

Available to: 5-17 year olds. Parents/carers and siblings can also join in if they wish.

Disabled toilets and ramps are available at the venue.

***This activity is free of charge*.**

BOOKING IS ESSENTIAL.

Contact: Daf - 07970 770990
daf@giftedworkshops.com



Tamworth Weekend Playscheme - Waiting List

A Playscheme is running in Tamworth on Saturdays, 10am-2pm.

If you would like to join the waiting list for this activity please contact Belinda on the number below for more information and to find out about latest availability.

Provider: Core Assets Children's Services.

Venue: Rawlett School, Comberford Road, Tamworth, B79 9AA.

Available to: 5-17 year olds. Parents/carers do not need to stay.

Activities are suitable for young people with a wide range of disabilities and support needs. Support for children with personal care needs is available.

***This activity is free of charge*.**

BOOKING IS ESSENTIAL.

Contact: Belinda Maskell - 01527 834300 / 07813 054641
belinda.maskell@coreassets.com

Playscheme at Watermill School

Provider: Crossroads Care Staffordshire.

Venue: Watermill School, Turnhurst Road, Chell, Stoke on Trent, ST6 6JZ.



When: 10am-3pm on:

Monday 18th August, Tuesday 19th August, Wednesday 20th August, Thursday 21st August and Friday 22nd August.

Available to: 8-17 year olds living in Stafford, Staffordshire Moorlands and Newcastle. Activities are suitable for young people with a wide range of disabilities and support needs. Personal care is available.

If spaces are available they may be offered to children and young people living in other areas of Staffordshire.

***This activity is free of charge*. BOOKING IS ESSENTIAL.**

Please book a month in advance between the 1st and the 20th of each month or if this is not possible please contact Crossroads to see if there are any spaces left. Once you make your first set of bookings for the Crossroads activities, a member of the team will come out to meet you and your child. At this meeting, Crossroads will put together a care plan detailing the needs of your child. This enables you to leave your child in the care of Crossroads whilst they attend the activities. Notification will be sent to you after the closing date for bookings. Transport may be available for children from Stafford, Staffordshire Moorlands and Newcastle.

Contact: Telephone 01782 207863.

Swimming at Dimensions

Provider: Crossroads Care Staffordshire.

Venue: Dimensions, Burslem, Stoke on Trent.



When: Saturday 6th September, 1-3pm.

Available to: 8-17 year olds living in Stafford, Staffordshire Moorlands and Newcastle. Activities are suitable for young people with a wide range of disabilities and support needs. Personal care is available.

If spaces are available they may be offered to children and young people living in other areas of Staffordshire.

***This activity is free of charge*. BOOKING IS ESSENTIAL.**

Please book a month in advance between the 1st and the 20th of each month or if this is not possible please contact Crossroads to see if there are any spaces left. Once you make your first set of bookings for the Crossroads activities, a member of the team will come out to meet you and your child. At this meeting, Crossroads will put together a care plan detailing the needs of your child. This enables you to leave your child in the care of Crossroads whilst they attend the activities. Notification will be sent to you after the closing date for bookings. Transport may be available for children from Stafford, Staffordshire Moorlands and Newcastle.

Contact: Telephone 01782 207863.

Bowling at Festival Park

Provider: Crossroads Care Staffordshire.

Venue: Festival Park, Etruria, Stoke on Trent.

When: Saturday 19th July, 11am-1pm.

Available to: 8-17 year olds living in Stafford, Staffordshire Moorlands and Newcastle. Activities are suitable for young people with a wide range of disabilities and support needs. Personal care is available.

If spaces are available they may be offered to children and young people living in other areas of Staffordshire.

***This activity is free of charge*.**

BOOKING IS ESSENTIAL.

Please book a month in advance between the 1st and the 20th of each month or if this is not possible please contact Crossroads to see if there are any spaces left. Once you make your first set of bookings for the Crossroads activities, a member of the team will come out to meet you and your child. At this meeting, Crossroads will put together a care plan detailing the needs of your child. This enables you to leave your child in the care of Crossroads whilst they attend the activities. Notification will be sent to you after the closing date for bookings. Transport may be available for children from Stafford, Staffordshire Moorlands and Newcastle.

Contact: Telephone 01782 207863.



Sailing at Rudyard Lake

Provider: Crossroads Care Staffordshire.

Venue: Rudyard Lake, near Leek.

When: Sunday 10th August, 10am-3pm.

Available to: 8-17 year olds living in Stafford, Staffordshire Moorlands and Newcastle. Activities are suitable for young people with a wide range of disabilities and support needs. Personal care is available.

If spaces are available they may be offered to children and young people living in other areas of Staffordshire.

***This activity is free of charge*.**

BOOKING IS ESSENTIAL.

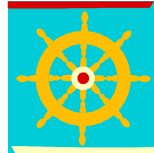
Please book a month in advance between the 1st and the 20th of each month or if this is not possible please contact Crossroads to see if there are any spaces left. Once you make your first set of bookings for the Crossroads activities, a member of the team will come out to meet you and your child. At this meeting, Crossroads will put together a care plan detailing the needs of your child. This enables you to leave your child in the care of Crossroads whilst they attend the activities. Notification will be sent to you after the closing date for bookings. Transport may be available for children from Stafford, Staffordshire Moorlands and Newcastle.

Contact: Telephone 01782 207863.



Day Trip on Beatrice Barge

Provider: Crossroads Care Staffordshire.



When: Saturday 2nd August, 10am-3pm.

Available to: 8-17 year olds living in Staffordshire Moorlands. Activities are suitable for young people with a wide range of disabilities and support needs. Personal care is available.

If spaces are available they may be offered to children and young people living in other areas of Staffordshire.

***This activity is free of charge*.**

BOOKING IS ESSENTIAL.

Please book a month in advance between the 1st and the 20th of each month or if this is not possible please contact Crossroads to see if there are any spaces left. Once you make your first set of bookings for the Crossroads activities, a member of the team will come out to meet you and your child. At this meeting, Crossroads will put together a care plan detailing the needs of your child. This enables you to leave your child in the care of Crossroads whilst they attend the activities. Notification will be sent to you after the closing date for bookings. Transport may be available for children from Staffordshire Moorlands.

Contact: Telephone 01782 207863.

BBQ and Play at Tittesworth Reservoir

Provider: Crossroads Care Staffordshire.



When: Sunday 24th August, 11am-2.30pm

Available to: 8-17 year olds living in Staffordshire Moorlands. Activities are suitable for young people with a wide range of disabilities and support needs. Personal care is available.

If spaces are available they may be offered to children and young people living in other areas of Staffordshire.

***This activity is free of charge*.**

BOOKING IS ESSENTIAL.

Please book a month in advance between the 1st and the 20th of each month or if this is not possible please contact Crossroads to see if there are any spaces left. Once you make your first set of bookings for the Crossroads activities, a member of the team will come out to meet you and your child. At this meeting, Crossroads will put together a care plan detailing the needs of your child. This enables you to leave your child in the care of Crossroads whilst they attend the activities. Notification will be sent to you after the closing date for bookings. Transport may be available for children from Staffordshire Moorlands.

Contact: Telephone 01782 207863.

Summer Playscheme in Cheadle

Provider: Crossroads Care Staffordshire.



Venue: Cheadle Children's Centre.

When: TBC. For information on dates please contact Crossroads Care on the number below.

Available to: 8-17 year olds living in Staffordshire Moorlands. Activities are suitable for young people with a wide range of disabilities and support needs. Personal care is available.

If spaces are available they may be offered to children and young people living in other areas of Staffordshire.

***This activity is free of charge*.**

BOOKING IS ESSENTIAL.

Please book a month in advance between the 1st and the 20th of each month or if this is not possible please contact Crossroads to see if there are any spaces left. Once you make your first set of bookings for the Crossroads activities, a member of the team will come out to meet you and your child. At this meeting, Crossroads will put together a care plan detailing the needs of your child. This enables you to leave your child in the care of Crossroads whilst they attend the activities. Notification will be sent to you after the closing date for bookings. Transport may be available for children from Staffordshire Moorlands.

Contact: Telephone 01782 207863.

After School Football Clubs



Provider: Staffordshire FA.

Venue: Various.

Any schools, colleges and community groups interested in offering these sessions should contact Jamie on the number below.

When: Times vary at each venue.

Available to: 5-17 year olds. Activities are suitable for young people with a wide range of disabilities and support needs.

Parent/carers and siblings also welcome.

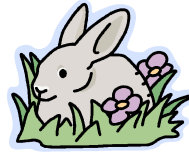
***This activity is free of charge*.**

Contact: Jamie Leaning - 01785 256994
or 07816 536446

jamie.leaning@staffordshirefa.com

Countryside Fun

Lots of activities which may include pond dipping, bug hunting and flower arranging as well as a chance to meet various animals.



Provider: Chase Aqua Rural Enterprise CIC (CARE).

Venue: CARE, Carney Pools, Bishton Lane, Wolseley Bridge, Stafford, ST18 0XE.

When: 10am - 1pm on:

July - Wednesday 23rd, Friday 25th, Saturday 26th, Thursday 31st

August - Friday 1st, Saturday 2nd, Thursday 7th, Wednesday 13th, Friday 15th, Saturday 16th

Available to: 5-17 year olds and their parents/carers and siblings.

Activities are suitable for young people with a wide range of disabilities and support needs. Disabled toilets are available.

There are ramps to all facilities and accessible pathways to all parts of the project. A parent/carer/support worker must stay with young people during the session.

Refreshments including tea, coffee, squash and biscuits are provided. Families are very welcome to bring packed lunches with them which they can stay and eat after the session.

***This activity is free of charge*. BOOKING IS ESSENTIAL.**

Contact: Carol Parkes - 07772 273033

Carol Carney - 07814 237211

info@chaseaquaruralenterprise.com

Holiday Playscheme

Wide range of activities available including access to outdoor play area, indoor soft play and playroom, art and craft activities, sport, treasure hunts and baking.



Provider: North Staffs Special Adventure Playground.

Venue: North Staffs Special Adventure Playground, Stanier Street, Newcastle, ST5 2SU.

When: 10am-3pm on the dates below:

- Wednesday 30th July (12 to 17 years)
- Tuesday 5th August (6 to 11 years)
- Wednesday 13th August (12 to 17 years)
- Tuesday 19th August (6 to 11 years)
- Wednesday 27th August (12 to 17 years)

Children/young people will need to bring a packed lunch.

Available to: This activity is open to children and young people with a wide range of disabilities and support needs. Parents/carers do not need to attend. Personal care can be provided. For young people requiring the administration of medication, please speak to Hannah Dean when booking to check whether your child's medical needs can be met. Facilities in this single storey building with no steps include portable hoist and ceiling hoist. An adult-sized changing bed is available in the accessible bathroom area.

This activity is free of charge but any voluntary contributions that parents/carers wish to make will be gratefully accepted.

BOOKING IS ESSENTIAL.

Contact: Hannah Dean - 01782 717612

nsadventure@lineone.net

Horse Riding

Horse riding, sensory courses and themed events. Sessions can be tailored to the individual needs of the group.



Provider: Gartmore Riding School.

Venue: Gartmore Riding School, Hall Lane, Hammerwich, Burntwood, WS7 0JT.

When:

1. Riding Club - 6 week programme with presentation at the last session. Suitable for all ages.

Sundays, 11am-1pm on: 29th June, 6th July, 13th July, 20th July, 27th July and 3rd August

Children/young people must attend each session. Everyone completing the programme will receive a British Horse Society Progressive Riding and Stable Management Certificate. Parents/carers do not need to stay with children if they have attended sessions at Gartmore before. Parents/carers of children who have not previously attended must stay for the first session but then do not need to stay for other sessions - please discuss this further with Tracy.

2. Themed Events - suitable for all ages

- Ride & Road Safety - Tuesday 5th August, 11am-1pm
- Wild West - Tuesday 26th August, 11am-1pm

3. Sensory Event - for children and young people with more complex needs and less confident riders. Suitable for all ages.

- Tuesday 12th August, 11am-1pm
- Thursday 28th August, 11am-1pm

Available to: Children and young people up to 17 years old. Activities are suitable for young people with a wide range of disabilities and support needs. Please discuss your child's support needs with Tracy to ensure that activities are suitable.

***This activity is free of charge*. BOOKING IS ESSENTIAL.**

Contact: Tracy - 01543 686117
gartmoreridingschool@googlemail.com

Multi Sports Holiday Clubs

Fun games, skills, competitions and much more. Sessions will be adapted to suit the needs of the young people.



Provider: Staffordshire FA.

Venue	Week 1	Week 2	Week 3	Week 4	Week 5	Week 6 (Trips)
Tuesdays (indoor) Wilnecote Leisure Centre, Tinkers Green Road, Wilnecote, Tamworth , B77 5LE.	22nd July (10.30am- 2.30pm)	29th July (10.30am- 2.30pm)	5th August (10.30am- 2.30pm)	12th August (10.30am- 2.30pm)	19th August (10.30am- 2.30pm)	26th August (10.30am-2.30pm)
Wednesdays (indoor) Stafford Sports College, Wolverhampton Road, Stafford , ST17 9DJ.	23rd July (10.30am- 2.30pm)	30th July (10.30am- 2.30pm)	6th August (10.30am- 2.30pm)	13th August (10.30am- 2.30pm)	20th August (10.30am- 2.30pm)	27th August (10.30am-2.30pm)
Thursdays (indoor) Kidsgrove Sports Centre, Forth Avenue, Kidsgrove , ST7 1DR.	24th July (10.30am- 2.30pm)	31st July (10.30am- 2.30pm)	7th August (10.30am- 2.30pm)	14th August (10.30am- 2.30pm)	21st August (10.30am- 2.30pm)	28th August (10.30am-2.30pm)
Fridays (indoor) Queenscroft School, Birmingham Road, Lichfield , WS13 6PJ.	25th July (10.30am- 2.30pm)	1st August (10.30am- 2.30pm)	8th August (10.30am- 2.30pm)	15th August (10.30am- 2.30pm)	22nd August (10.30am- 2.30pm)	29th August (10.30am-2.30pm)

Available to: 5-16 year olds (older children may be considered if spaces are available). Activities are suitable for young people with a wide range of disabilities and support needs. Support with personal care needs is not available. Parents/carers and siblings also welcome. To take part in the trips during week 6, young people must have attended at least 2 other sessions. If your child requires emergency medication e.g. insulin to be administered please discuss this with the coaches at the sessions.

***This activity is free of charge*. BOOKING IS ESSENTIAL.**

Contact: Jamie Leaning - 01785 256994 or 07816 536446

jamie.leaning@staffordshirefa.com

Stay and Play Club

Drop in sessions featuring sensory room, arts and crafts, bouncy play and more. Clubs are supported by staff and volunteers trained to work with individuals with Autism.



Provider: Stafford Branch of the National Autistic Society .

Venue: Littleworth Community Centre, St Thomas Street, Stafford, ST16 3UU.

When: Saturdays (10.30am - 12.30pm) on:

- 5th and 19th July
- 2nd and 16th August
- 6th and 20th September

Available to: Children up to 11 years old with an Autistic Spectrum Disorder and their families.

Disabled toilets are available at the venue.

***Voluntary contribution of £1 per child*.**

No need to book, just call in.

Contact:

Mandy Binns - 07789 032153
Sarah Binks - 07760 891699
stafford@nas.org.uk

Facebook - NAS Stafford Branch

Youth Club

Regular trips out and sessions at the Littleworth Community Centre, Stafford. Make friends, have fun and do all sorts of different and exciting activities including cookery, arts and crafts and more. Clubs are supported by staff and volunteers trained to work with individuals with Autism.



Provider: Stafford Branch of the National Autistic Society.

Venue: Littleworth Community Centre, St Thomas Street, Stafford, ST16 3UU. Plus day trips at various venues.

When: Saturdays on:

- 12th and 19th July
- 2nd and 16th August,
- 6th and 20th September

Activities and times can vary so please contact us before attending.

Available to: 11-16 year olds with an Autistic Spectrum Disorder. Staff and volunteers provide support so parents/carers do not need to stay. Disabled toilets are available at the Community Centre.

***Voluntary contribution of £1 per child*.**

BOOKING IS ESSENTIAL.

Contact:

Mandy Binns - 07789 032153
Sarah Binks - 07760 891699
stafford@nas.org.uk

Facebook - NAS Stafford Branch

National Autistic Society Stafford Branch Summer Playscheme

Lots of fun activities for children and young people with an Autism Spectrum Disorder and their families including play sessions and day trips to a range of attractions including Alton Towers Water Park and Trentham Monkey Forest.



Provider: Stafford Branch of the National Autistic Society .

Venue/When:

1. The Play Shed - 9-11am on: Monday 28th July, Monday 4th August, Monday 11th August, Monday 18th August.

Play sessions for children and young people who have an Autism Spectrum Disorder, their families and friends. There will be exclusive use of the facilities with relaxed height restrictions.

Venue: The Play Shed, Stafford, ST16 2EX (behind Tesco, Stafford).

****Voluntary contribution of £1 per child, per session* (this can be given on the day of each session). BOOKING IS ESSENTIAL.***

2. Birches Valley - Tuesday 22nd July

Meet up at Birches Valley Visitor Centre at 11am for a fun day, bring a picnic. Suitable for all ages.

****No voluntary contribution is requested*. BOOKING IS ESSENTIAL.***

3. Monkey Forest - Thursday 31st July

Meet up at the Monkey Forest, Trentham, Stoke on Trent, ST4 8AY at 11am. Bring your own lunch or use the facilities available. Suitable for all ages.

****voluntary contribution of £3 per person*. BOOKING IS ESSENTIAL.***

4. Tour of Stafford Fire Station - Tuesday 5th August

Meet at Stafford Fire Station, Beaconside, Stafford, ST18 0DD at 2.30pm for a tour of the fire station and a chance to meet the firemen. (Please be aware that if there is an emergency at the fire station, the tour will have to be cancelled and rearranged for another date).

****No voluntary contribution is requested*. BOOKING IS ESSENTIAL.***

Please also see page 25 for more NAS activities

National Autistic Society Stafford Branch Summer Playscheme continued...

5. Fishing/Horticulture Day - Tuesday 12th August

Meet at Albrighton Trust Moat and Gardens, Blue House Lane, Albrighton, Near Wolverhampton, WV7 3FL at 10am.

A day of two activities - fishing and a horticulture experience, including use of the sensory garden. This activity is appropriate for children aged 8 and over. Please bring a packed lunch. Further information on the facilities is on the website: <http://www.albrightontrust.org.uk/>

***Voluntary contribution of £3 per child*. BOOKING IS ESSENTIAL.**

6. Alton Towers Waterpark - Wednesday 13th August

Alton Towers Waterpark, Alton, Staffordshire, ST10 4DB. Meet us at the Waterpark reception at 9.45am. Session is 10am-2.30pm.

***voluntary contribution of £5 per person*. BOOKING IS ESSENTIAL.**

7. Stafford Castle - Tuesday 19th August

Meet at Stafford Castle, Newport Road, Stafford, ST16 1DJ at 10.30am for a number of activities including arming the knight and tour of the castle with total use of all of the facilities. Bring your own lunch. Suitable for all ages.

***voluntary contribution of £2 per child*. BOOKING IS ESSENTIAL.**

8. Lower Drayton Farm - Wednesday 27th August

Lower Drayton Farm, Lower Drayton Lane, Penkridge, ST19 5RE. Come and join us at the farm, meet the animals, have a trailer ride and try the maze. Meet up at the farm at 10.30am. Open to the whole family.

***voluntary contribution of £2 per child*. BOOKING IS ESSENTIAL.**

9. End of Summer Party - Friday 29th August

Come and join us for our end of summer party from 4-6pm at Littleworth Community Centre, St Thomas Street, Stafford, ST16 3UU.

Magic show, balloon modelling, disco and party games. Please bring a plate of food for your child. Suitable for all ages.

***voluntary contribution of £2 per child*. BOOKING IS ESSENTIAL.**

Available to: Children and young people who have an Autism Spectrum Disorder, their families and friends. Please also see individual activity descriptions above for further information. Children and young people must be accompanied and supervised by a parent/carer at all times.

Contact: To book places please complete and return the booking form along with cheques for any voluntary contributions (except for the Play Shed sessions which can be accepted at the event) to: Mandy Binns, 11 Pine Crescent, Walton on the Hill, Stafford, ST17 0ND.

Please make any cheques payable to: The Stafford Branch of the National Autistic Society.

Booking forms may also be emailed to: Stafford@nas.org.uk

If you have any questions about this process or the activities, please contact Mandy or Sarah on 07762105706 or 07760891699 or email Stafford@nas.org.uk

Farm Activities

Activities include pizza making, and other cookery sessions, a chance to meet the animals, nature walks and craft making.



Provider: DW Cope Partners.

Venue: Beaudesert Park Farm, Upper Longdon, Rugeley, WS15 4LN.

When:

1. Fun on the Farm - for over 5's and their families.

A family day which includes pizza and crumble making, seeing the animals, a nature walk and making crafts to take home.

- 10am-3pm on: Sunday 6 July, Monday 28 July, Wednesday 6 August, Friday 15 August, Saturday 23 August and Saturday 20 September

2. Animal Magic - for over 5's and their families.

A short family session to meet some of the farm animals, stroke the chicks and small animals.

- Sunday 20th July, 10am - 12pm.

3. Little Red Hen Day - for under 7's and their families

Lots of fun activities including making pizza and dessert for lunch, seeing the animals and making something to take home.

- Sunday 10th August (10am-1.30pm)

4. Places are also still available for the **Little Red Hen Day** on Saturday 28th June (10am-1.30pm) for under 7 and their families.

Available to: Please see descriptions above for age ranges. Activities are suitable for children and young people with a wide range of disabilities and support needs. Parents/carers must stay with their children throughout the activity. Please speak to Mary for further details on facilities available at the venue.

***This activity is free of charge*. BOOKING IS ESSENTIAL.**

Contact: Mary Cope - 07984 716494

beaudesertparkfarm@gmail.com

Chase It! Activities

Lots of activities including Trampolining, X Biking and Day Camps during the school holidays.

Provider: Chase It! (Wigan Leisure and Culture Trust).

Venue: Various venues in the Cannock Chase area.

When:

- **Monday Club** - Mondays at Chase Leisure Centre, Cannock (4-6pm) (excluding bank holidays). Multi-activity session incorporating sensory equipment available in the new Sensory Room.
- **Activity Session** - Thursdays at Chase Leisure Centre, Cannock (5.15-7.30pm, term time only.)
- **Special Friends Club** - Thursdays at SNAP, Cannock (3.30-5.30pm).
- **Summer Holiday Activities** - lots of fun activities. Please contact Debbie Pearce for more information.

Available to: 5 - 17 year olds. Activities are suitable for young people with a wide range of disabilities and support needs. Support for children with personal care needs is available.

Siblings/parents/carers are welcome to attend some activities - please contact Debbie Pearce for more information.

Priority will be given to children and young people living in the Cannock area, however, if spaces are available they may be offered to those in other areas of Staffordshire.

***Activities are free for children and young people who have a disability/additional need*.**

BOOKING IS ESSENTIAL.

Contact: Debbie Pearce - 01543 501520
deborah.pearce@wlct.org



Inspire Clubs

Range of fun activities provided at each club e.g. swimming, soft play, multi sport and much more. To find out what is on offer at individual clubs please contact Sport Across Staffordshire and Stoke on Trent using the contact details below.



Provider: Sport Across Staffordshire and Stoke on Trent.

Venue: Please see pages 29-31 for full listings.

When: Please see pages 29-31 for full listings.

Available to: 5-17 year olds and their parents/carers and siblings. Activities are suitable for young people with a wide range of disabilities and support needs. Facilities include disabled toilets and ramps.

Please ensure that everybody attending the sessions wears appropriate clothing and non marking flat shoes (ideally trainers).

***This activity is free of charge*.**

****There is no need to book but please note that dates and activities are subject to change - please check before attending.****

Contact: 01785 619585 or email disabilitysport@staffordbc.gov.uk



Inspire Multi Sports Clubs (continued...)

July 2014

Date	Time	Borough	Venue	Activity
Sat 5th July	10am-12pm	East Staffs	Meadowside Leisure Centre	Multi Sport
Sun 6th July	10am-12pm	Stafford	Stafford Leisure Centre	Multi Sport
Sun 6th July	1-3pm	Newcastle	Jubilee 2	Climbing/Multi Sport/ Swimming
Thurs 10th July	5-7pm	Lichfield	King Edwards Leisure Centre	Golf/Multi Sport
Sat 12th July	3-5pm	Tamworth	Wilnecote Leisure Centre	Multi Sport/Swimming
Sun 13th July	1-3pm	South Staffs	Penkridge Leisure Centre	Swimming/Multi Sport
Sun 13th July	3-5pm	Moorlands	Biddulph Valley Leisure Centre	Swimming/Multi Sport
Sat 19th July	10am-12pm	East Staffs	Meadowside Leisure Centre	Multi Sport
Sun 20th July	10am-12pm	Stafford	Stafford Leisure Centre	Multi Sport
Sun 20th July	1-3pm	Newcastle	Jubilee 2	Goalball/Multi Sport/ Swimming
Sat 26th July	3-5pm	Tamworth	Wilnecote Leisure Centre	Multi Sport/Swimming
Sun 27th July	1-3pm	South Staffs	Penkridge Leisure Centre	Swimming/Multi Sport
Sun 27th July	3-5pm	Moorlands	Biddulph Valley Leisure Centre	Swimming/Multi Sport

Please see page 28 for more information on Inspire Clubs

Inspire Multi Sports Clubs (continued...)

August 2014

Date	Time	Borough	Venue	Activity
Sat 2 nd Aug	10am-12pm	East Staffs	Meadowside Leisure Centre	Multi Sport
Sun 3 rd Aug	10am-12pm	Stafford	Stafford Leisure Centre	Multi Sport
Sat 9 th Aug	1-3pm	Newcastle	Westport Lake	Cycling
Sat 9 th Aug	3-5pm	Tamworth	Wilnecote Leisure Centre	Multi Sport / Swimming
Sun 10 th Aug	1-3pm	South Staffs	Penkridge Leisure Centre	Swimming/Multi Sport
Sun 10 th Aug	3-5pm	Moorlands	Biddulph Valley Leisure Centre	Swimming/Multi Sport
Sat 16 th Aug	10am-12pm	East Staffs	Meadowside Leisure Centre	Multi Sport
Sun 17 th Aug	10am-12pm	Stafford	Stafford Leisure Centre	Multi Sport
Thurs 21 st Aug	5-7pm	Lichfield	Trip (please contact the provider for more information)	TBC
Sat 23 rd Aug	3-5pm	Tamworth	Wilnecote Leisure Centre	Multi Sport / Swimming
Sun 24 th Aug	1-3pm	South Staffs	Penkridge Leisure Centre	Swimming/Multi Sport
Sun 24 th Aug	3-5pm	Moorlands	Biddulph Valley Leisure Centre	Swimming/Multi Sport
Sat 30 th Aug	10am-12pm	East Staffs	Meadowside Leisure Centre	Multi Sport
Sun 31 st Aug	10am-12pm	Stafford	Stafford Leisure Centre	Multi Sport
Sun 31 st Aug	1-3pm	Newcastle	Jubilee 2	Boccia/Multi Sport/ Swimming

Please see page 28 for more information on Inspire Clubs

Inspire Multi Sports Clubs (continued...)

September 2014

Date	Time	Borough	Venue	Activity
Thurs 4 th Sept	5-7pm	Lichfield	King Edwards Leisure Centre	Multi Sport
Sun 7 th Sept	1-3pm	South Staffs	Penkridge Leisure Centre	Swimming/Multi Sport
Sun 7 th Sept	3-5pm	Moorlands	Biddulph Valley Leisure Centre	Swimming/Multi Sport
Sat 13 th Sept	10am-12pm	East Staffs	Meadowside Leisure Centre	Multi Sport
Sat 13 th Sept	3-5pm	Tamworth	Wilnecote Leisure Centre	Multi Sport/Swimming
Sun 14 th Sept	10am-12pm	Stafford	Stafford Leisure Centre	Multi Sport
Sun 14 th Sept	1-3pm	Newcastle	Jubilee 2	Zumba/Multi Sport/ Climbing
Thurs 18 th Sept	5-7pm	Lichfield	King Edwards Leisure Centre	Wheelchair Basketball/ Multi Sport
Sun 21 st Sept	1-3pm	South Staffs	Penkridge Leisure Centre	Swimming/Multi Sport
Sun 21 st Sept	3-5pm	Moorlands	Biddulph Valley Leisure Centre	Swimming/Multi Sport
Sat 27 th Sept	10am-12pm	East Staffs	Meadowside Leisure Centre	Multi Sport
Sat 27 th Sept	3-5pm	Tamworth	Wilnecote Leisure Centre	Multi Sport / Swimming
Sun 28 th Sept	10am-12pm	Stafford	Stafford Leisure Centre	Multi Sport
Sun 28 th Sept	1-3pm	Newcastle	Jubilee 2	Sitting Volleyball/Multi Sport/Swimming

Please see page 28 for more information on Inspire Clubs

Other Activities/Services...

There are lots of other activities taking place across Staffordshire which you may also like to try.

Information on some of these activities and other useful services is included over the next few pages.

Inclusive Cycling Centre

A range of adapted and non adapted bikes are now available to suit all ages and abilities at Shobnall Leisure Complex in Burton.



Qualified staff are on hand to introduce the rider to the bike and ensure safe cycling.

Parents/carers also have the opportunity to cycle with or alongside their child either using the two seater cycles or the non adapted bikes.

Cost: From £2.50 per bike.

For information on session times please contact the telephone numbers below.

Please book 48 hours in advance to ensure a member of staff is available to assist.

To book please call Shobnall Leisure Complex on 01283 508180 or Neil Brown on 01283 508192 or 01283 508191.

Multi-Sensory Room at Cannock Chase Leisure Centre

A multi-sensory room, with additional soft play equipment is now available at Cannock Chase Leisure Centre, Cannock.

The magical new sensory room includes the use of wind, moving sound, light, aroma, vibration and video to stimulate the senses.

This can help individuals to be more active, develop relationships with family members, try new things, improve communication and social skills and make new friends.

For more information please contact Debbie Pearce on 01543 501520 or at deborah.pearce@wlct.org



Changing Places Toilets

A Changing Places Toilet facility is available in Number 1 Staffordshire Place in the centre of Stafford.

This is available to the public when the building is open Monday to Friday, 8am - 6pm.

For information on this and other Changing Places toilets in Staffordshire and surrounding areas please visit the Changing Places website:

www.changing-places.org/Findatoilet/Locationmap/tabid/70/Default.aspx

Other Activities/Services...

Max Card - Free or Discounted Access to Attractions Across the UK

Max Card provides looked-after children and children with complex needs and their friends and family with free or discounted access to attractions across the UK.

The scheme is designed to help foster carers and families save money on great days out at castles, zoos, museums and more.

SkillShare has purchased some Max Cards for families in Staffordshire.

For further details and to apply for a card, please call Parent Partnership on 01785 356921.

For a list of venues please visit the Max Card website at www.mymaxcard.co.uk

Purple Pages Activity Finder

Information on lots of other services and activities across Staffordshire is available on the Purple Pages website at the link below.

<http://staffordshirecarespurplepages.info/>

Sports Clubs in Staffordshire

Information on a wide range of sports clubs is available in the Sport Across Staffordshire and Stoke on Trent 'Sports Club Finder' on their website at the link below:

<http://www.sportacrossstaffordshire.co.uk/Clubs/ClubFinder>

Other Activities/Services...

North Staffs Asperger Autism Association (NSAAA)

Who can join?

- Any child or adult with an Autistic Spectrum Condition (ASC).
- A parent, carer or professional who has an interest in ASC.
- Anyone who is awaiting diagnosis of ASC.

How to join...

Email or telephone the NSAAA office to request a membership form. Membership is £5 per person (annual cost). Once you have become a member you can join any of the groups, trips and activities and will receive weekly emails updating you about services and events.

Drop in...

Regular drop in sessions are taking place where members can just pop in to get some help and advice or hire a book.

Parent/Carer Support Group

A support group is held at the Newcastle Congregational Church on the second Wednesday of every month, 10am-12pm.

A Dudes Group

Fun Youth Clubs - one club is open to 7-12 years olds and other clubs are open to 13-17 year olds. Clubs take place at the Newcastle Congregational Church.

Activities and Trips Out

Soft play and badminton sessions take place each month. A variety of trips out and events will also be taking place regularly throughout the year.

For more information on these activities and services and to become a member please contact NSAAA on 01782 627002 or email info@nsaaa.co.uk

You can also visit the website at www.nsaaa.org.uk

Have Your Say

Children and Young People's Views

We want to hear from children and young people about what is important to them.

There are lots of ways to get involved including:

- ◆ Young Peoples Panels
- ◆ Questionnaires
- ◆ 1 to 1 discussions
- ◆ Focus Groups
- ◆ and much more...

For more information please contact Amy Duddy by calling or texting **07975 655466** or email amy.duddy@staffordshire.gov.uk

Parents and Carers Views

Parents and carers can make a difference to the service their families receive by getting involved with the Staffordshire Parent Action Network (SPAN) which is funded by Aiming High.

Share views, find information and influence decisions by registering on the Aiming High E Forum or by joining the Staffordshire Parent Action Network (SPAN).

For more information about SPAN or to visit the E Forum please visit the SPAN website www.span-info.co.uk

We would love to hear your views...

If you have any comments or feedback on Aiming High activities or this guide let us know by emailing

aiminghigh@staffordshire.gov.uk

Keeping up to date with Aiming High Activities...

Look out for our next Activity Guide which will feature more Aiming High activities taking place later on in the year.

If you are not already on our email distribution list but would like to receive updates on Aiming High and other activities for children and young people with a disability or additional need please email us at:

aiminghigh@staffordshire.gov.uk

AIMING HIGH IN STAFFORDSHIRE

Staffordshire County Council
Wedgwood Building
Tipping Street
Stafford
ST16 2DH.

Phone: 01785 278072

Email: aiminghigh@staffordshire.gov.uk

Website: www.staffordshire.gov.uk/aiminghigh